

Save Space • Save Energy • Reduce Fire Hazard

Protect Transition Duct

the dryerbox®

Today, you can place the dryer flush against the wall without crushing the exhaust hose or restricting airflow.

Install the Dryerbox® for more spacious, more efficient and safer homes.

- Eliminate One Elbow
- Gain 6' of Allowable Duct Run
- Reduce Call Backs

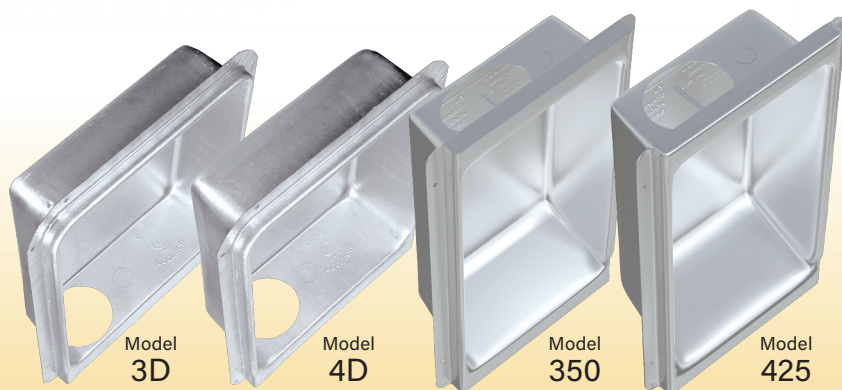
*Protect Transition Hose
Neatly in the Wall*



Model 480 — 22 Gauge Aluminized Steel
Shown Painted



Unprotected Hose is a Fire Hazard



NEW
Model
480

Exhaust Direction	Wall Size	Model Number
Both	2x6	DB-480
Upward	2x6	DB-425
Upward	2x4	DB-350
Downward	2x6	DB-4D
Downward	2x4	DB-3D

Finish the Laundry Right

Protecting flex hose lessens the risk of lint buildup, provides energy savings by removing the kinks usually found in the exhaust hose, and makes for a simpler, more professional looking finish.

INOVATE

888-443-7937

250 South Central Boulevard • Suite 207 • Jupiter FL 33458-8812 • Fax: 561-745-9723

www.Dryerbox.com