

Safe & Efficient Transition Hose that's Easy to Install



Installation Tips

DryerFlex® is safe, efficient, and easy to install. For best results, follow these steps for installation. Items needed: Screwdriver, utility knife, one package of DryerFlex, which includes two DryerClamps.

Step 1 - Unplug the dryer and pull it away from the wall far enough to access the exhaust duct.

Step 2 - Using a screwdriver, loosen the clamp that is securing the duct to the back of the dryer. Slide the clamp back towards you, and disconnect the end of the old duct from the dryer.

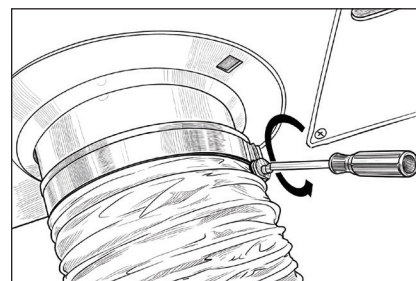
Step 3 - Next, loosen the clamp at the wall vent connection, slide the clamp back towards you, and remove the end of the duct.

Step 4 - Discard the old duct and both clamps. Thoroughly clean the dryer's collar where the duct connects and the wall vent opening to remove lint and debris before installing the new duct.

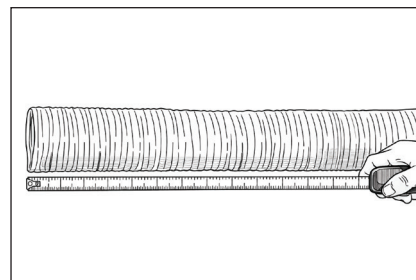
Step 5 - Unwrap the new package of DryerFlex and lay it out on the floor, stretching it to meet the length needed to go from the back of the dryer to the wall vent opening. If the duct is too long, trim it to the desired length using a utility knife.

Step 6 - Loosen and expand one new clamp and slide it onto the collared opening at the back of the dryer. Attach one end of DryerFlex, pushing it firmly onto the collared opening. Position the clamp over the DryerFlex and collar, then tighten the screw to hold the duct in place. Do the same for the other end of the duct to attach it to the collar of the wall vent opening.

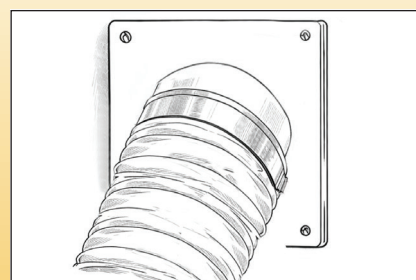
Step 7 - Remove any packaging and tools. Sweep the area, if needed. Gently push the dryer back into position against the wall. Plug the dryer in and run it for a few minutes to test the airflow, ensuring it is venting to the outside.



Step 2: Loosen the clamps, one at a time, to remove the old duct.



Step 5: Stretch DryerFlex out to the desired length and trim it.



Step 6: Attach DryerFlex to back of dryer and to the wall opening. Secure using the DryerClamps.